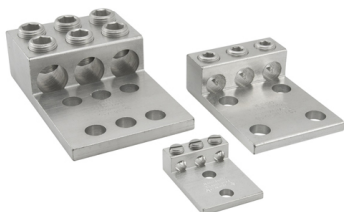


**SKU:** T3A2-600N

**UPC:** 0783669900576

**Features & Benefits:**

**Description:** Aluminum Mechanical Lug, Dual Rated, Conductor Range 600-2, 3 Ports, 6 Holes, 1/2in Bolt Size, 1-3/4in Hole Spacing, Tin Plated, UL, CSA, Same as T3A4-600N



## Specs

### Additional Class Attributes

Connection	Mechanical
Contains DE-OX®	No
Mounting Hole Type	Thru
Number of Conductors	3
Number of Mounting Holes	6
Number of Poles	1
Number of Ports / Wireways	3

### Dimensions

Dimension G (IN)	0.625
Dimension G (mm)	15.875
Drive Size Main	1/2
Drive Type Main	Internal Hex
Height (IN)	1.5
Height BX (IN)	2
Length (IN)	5.5
Mounting Bolt/Stud Size (mm)	304.8
Mounting Hole Diameter (IN)	0.562
Mounting Hole Diameter (mm)	14.2748
Mounting Hole Spacing (IN)	1.75
Mounting Hole Spacing (mm)	44.45
Tang Length (IN)	3.25
Tang Length (mm)	82.55
Tang Thickness (IN)	0.375
Tang Thickness (mm)	9.525
Tang Width (IN)	3.5
Tang Width (mm)	88.9
Weight (LB)	1.132
Weight BX (LB)	1.2791
Width (IN)	3.5
Width BX (IN)	6.1875

### Material and Finish

Conductor Material	Aluminum
Connector Finish	Tin
Insulation	NA
Material	Aluminum

Wire Binding Hardware Finish	Tin
Wire Binding Hardware Material	Aluminum

### Additional Technical Specifications

Conductor Type	Stranded
----------------	----------

### Bolt and Screw Sizes

Mounting Bolt/Stud Size	1/2
Number of Wire Binding Screws per Port	2
Wire Binding Screw Size	13/16
Wire Binding Torque	500

### General

Bag Quantity	1
Carton Quantity Description	STD PACK QTY 1
Direct Burial	No
Dual Rated	Yes
NEMA Code	S-588-3
UPC Code	78366990057

### Testing Standards

CSA File Number	LR-29601
CSA Standard	C22.2 No. 65-03
Prop65 Compliance	This product is in compliance with Prop65. It is not known to contain any chemicals associated with this regulation
ROHS Indicator	IND
UL Control Number	453G
UL / CULUS Specification	UL 486A/B Listed
UL File Number	E6207

### Environment and Temperature

Temperature Rating	90°C
--------------------	------

### Color

Color	Silver
-------	--------

### Conductor Ranges

Conductor Range AL Solid (Secondary, tap, load)	NA
Conductor Range AL Stranded (Primary, run, main, line)	600 kcmil - 2 Str
Conductor Range AL Stranded (Secondary, tap, load)	NA
Conductor Range CU Solid (Primary, run, main, line)	NA
Conductor Range CU Solid (Secondary, tap, load)	NA
Conductor Range CU Stranded (Primary, run, main, line)	600 kcmil - 2 Str
Conductor Range CU Stranded (Secondary, tap, load)	NA
Conductor Range AL Solid (Primary, run, main, line)	NA
Wire Combinations	NA

**Voltage**

**Voltage Rating**

35 kV